

# FR1200

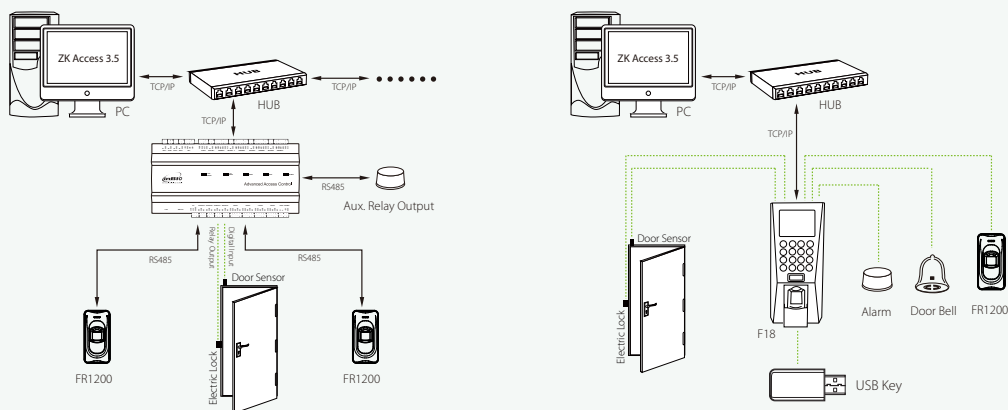
FR1200, a fingerprint reader with RS485 communication interface works with biometric access controllers and fingerprint standalone access control, including inBIO series controllers, F8 and so on. It offers the function of capturing and transferring fingerprint samples to access control panel. With its IP65 rated rugged structure, FR1200 offers extra durability in all weather conditions including outdoor environments.



## Specifications

<b>CPU</b> 324MHz	<b>Standard Function</b> ID Card Module	<b>Working Voltage</b> 12VDC	<b>Size</b> <b>Height:</b> 102mm
<b>Sensor</b> ZK small-sized sensor	<b>Optional Function</b> MF Card Module	<b>Working Temperature</b> 0°C ~ 45°C	<b>Width:</b> 50mm
<b>Communication</b> RS485	<b>Voice Prompt</b> Buzzer	<b>Protection Grade</b> IP65	<b>Depth:</b> 37mm

## Configuration



**SAFE EYE**  
 E-mail:-[rajeev@safeeye.in](mailto:rajeev@safeeye.in)  
 Phone:-01145124776/9811470985  
 Address:-D-58 dayanand, block shakarpur  
 delhi-110092

